

FALL 2017 Upcoming Auctions

McBride Consignment and Unreserved Auction for Maurice and Isabelle Bonneville (Bonneville Holdings Ltd)

10 am Saturday Sept 16, 2017 McBride, BC

Partial Listing (see teamauctions.com for full listing)

Tractors & Collector Tractors: JD 4030 2WD Tractor • 1948 Farm-All Row Crop Tractor • 1948 Ferguson Vintage Tractor • Allis-Chalmers WD45 Tractor • Allis-Chalmers Loader Tractor • 1956 IH 300 Loader Tractor **Construction / Industrial:** Early 1900's Cleveland Crawler • Case 580C 2WD Back Hoe • 1955 TD 5 Crawler Loader • 11' Dozer Blade **Harvest:** Qty of Grain Air Drying Parts **Haying:** Allied Auto Bale Stooker **Tillage & Seeding:** 40 ft Folding Diamond Harrows **Horse Drawn:** Horse Drawn 4 Wheel Fire Wagon • Horse Drawn Road Grader • Horse Drawn 4 Wooden Wheel Wagon • (20+) Wagon Wheels **Vehicles:** 1929 Chevrolet Truck • 1928 Essex Super Six Vintage 4 Door Car • 1967 Ford 850C T/A Dump Truck • 1987 Mercury Cougar Drag Car • 1968 Buick Wildcat Car • 1953 Buick Special Straight 8 • Ford Model T Engine & Transmission **3 PT, Lawn & Garden:** Craftsman Lawn Tractor • Power Fist Estate Pull Type Sprayer • Custom Built Log Splitter • PZ 2000 Swath Turner • Ford 7 ft Sickle Mower • JD 7 ft Sickle Mower • JD 48" Pallet forks • Craftsman Lawn Tractor • 20 ft Entrance Gate **Trailers:** 1000 Gal S/A Water Trailer • 2005 29 ft T/A Flat Deck Trailer • 36 ft Tri/A Gooseneck Trailer **Recreational:** Old Auto-Bogin Sled • 1975 Ski-Doo Elan 250 Snowmobile • 1973 Honda Trail CT 70 Motorcycle • 1999 Sea Breeze T/A Holiday Trailer **Building Material:** Qty of Rough Lumber **Shop & Tools:** Qty of Shop Items & Tools • Portable Shop Engine Hoist • Curtis Industrial Shop Air Compressor • Metal Quad Ramp • A-Frame Engine Hoist • Water Jacket Wood Heater • 1000 Gal Propane Tank • Champion 5500 Watt Generator • Older Tap & Die Set • Honda GC190 Gas Pressure Washer **Other:** Large Qty of Household Furniture, Collectables and Antiques • (2) 20 ft x 16" Unused Black Plastic Culverts • 2" Gas Sprinkler Pump & Suction Hose • Irrigation Pipe & Sprinklers • Covered Wagon • Democrat • One Man Vintage Bucking Saw • Pig Roasting Cooker

To Consign Call
Corey @ 780-898-5600

Consign
Now!



1928 Essex Super 6 4 Dr



Horse Drawn Fire Wagon

Unreserved Real Estate & Equipment Auction for the Estate of Neil McKinney

10 am Saturday September 23, 2017 – Mayerthorpe, AB



160± Acres



127.79± Acres

Real Estate sells @ 12 pm

Open House: Mon Aug 28 4 - 7 pm or
call 780-898-0729 for arrangement to view.



M1: SE36-56-10-W5 160± acres with home, shop, & barn

160± acre farm located 20 km south and west from Mayerthorpe, just 1.4 km off pavement. The 3 bedroom 2 bath home was built in 1990's. Outbuildings: heated shop, large livestock shelter, barn, pump house & grain storage unit. There are approximately ±70 acres of cropland. The balance of land is mixture of open and treed pasture around the home site. Surface Lease Revenue - \$6,400.00

M2: NW36-56-10-W5 - 127.79± acres bordering Little Paddle River



JD 7230 Premium MFWD Ldr



JD 4960 MFWD Tractor



Ford-Versatile 846 4WD



38 ft Bale Carrier



Bourgault 8800 Air Seeder



Renn Feed Wagon

Equipment Listing

Tractors & Attachments: JD 7230 Premium MFWD Loader Tractor • JD 4960 MFWD Tractor • 1990 Ford-Versatile 846 4WD Tractor • Shop Built 3 Pt Bale Fork **Harvest:** JD 7700 Combine • Shop Built 16 ft T/A Off Road Grain Trailer • Buhler Y360 Grain Cleaner • Westfield 7 X 36 ft Grain Auger • Scoop-A-Second 6x30 ft Grain Auger **Haying:** Farm King BM2450S 38 ft Bale Carrier • Hesston 1345 12 ft Hydro Swing Discbine • JD 566 Round Baler • NH 277 Square Baler • 20 ft Square Bale Elevator **Tillage & Seeding:** Case DOT 22 ft Double Offset Field Disc • Bourgault 8800 Air Seeder • IH 6200 24 ft Double Disc Press Drills • MF 129 Deep Tillage Cultivator • IH 55 34 ft Deep Tillage Cultivator • IH 45 24 ft Vibra Shank Cultivator • Older 50 ft Harrow Bar • Older 60 ft Field Sprayer • Older inland 50 ft Field Sprayer • Cockshutt 246 11 ft Deep Tillage Cultivator **Heavy Trucks:** 1979 IH 1810 Cab Over S/A Grain Truck • 1977 GMC C60 S/A Grain Truck • 1976 Ford 500 S/A Hoist Truck **Vehicles:** 2003 Dodge 2500 Reg Cab 4X4 Pickup **Trailers:** 2001 Southland ft G/N T/A Stock Trailer • 16 ft T/A Deck Trailer • Truck Box Trailer **3 PT, Lawn & Garden:** Country Clipper 2460KAJ-455 Zero Turn Mower • Sisma H305 120" 3 Pt HD Rototiller • Spray Tech Pull Type Estate Sprayer • Agri-Fab 17 Cu ft Garden Trailer **Recreational:** 2003 Honda Fourtrax 350 4X4 Quad **Bins, Buildings & Material:** Gemlo Wellsite 10 ft X 28 ft Skid Shack • Twister 5 Ring 14 ft Flat Bottom Grain Bin • Westeel 5 Ring Flat Bottom Grain Bin • Butler 3 Ring Flat Bottom Grain Bin • 10 ft X 30 ft Wooden Shed • 8 ft X 12 ft Wooden Garden Shed **Livestock, Feed & Equipment:** Renn 350 Stockmaster Feed Wagon • Farm Aid 550 Feed Mix Wagon • Haybuster 2650 Bale Processor • NH 675 T/A Manure Spreader • Buhler/Farm King 8" Roller Mill • Buhler 8" Roller Mill • Large Qty 10 – 24 ft Portable Panels, Feeders, etc **Shop Equipment, Tools, Household & Antiques, Silver Smithing Tools:** Sil Air Air Compressor • Graver Mach AT Machine • GRS Power Hone • Swivel Vise • Acrobat Micro Scope • Hand Press • Craftex 6" Buffer • Assortment of Hand Tools & Accessories for Silver Smithing and much more!

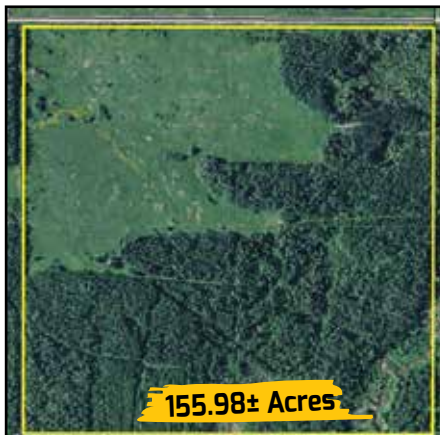
Selling Unreserved for Allen Nikkel Long Term Grazing Lease

12 pm Sat Sept 23, 2017 – Mayerthorpe, AB

In conjunction with the Estate of Neil

McKinney

GRL 090011
on NE15-58-10-W5
155.98± acres - approx
54 acres open, 72 AUMs
10 year term lease –
expiry Oct 31, 2025
Located: From
Mayerthorpe go west on
Hwy 43 to Sec Hwy 751,
then 7 km south and 1.8
km east on Twp Rd 583



155.98± Acres

Moores Agri-Trade
780-388-3759



**TEAM
AUCTIONS**

Sekura Auctions Since 1966

www.teamauctions.com

Drayton Valley AB 780-542-4337

La Crete AB 780-927-4060

**TEAM
AUCTIONS**

Sekura Auctions Since 1966

Unreserved Real Estate & Retirement Auction for Henry and Mary Wall

10 am - Saturday, October 7, 2017 - La Crete, AB

Attractive 11.79± acres with well maintained 3 bedroom 2 bath home, attached garage, heated shop, workshop, numerous storage buildings and granaries. Large vegetable garden and fruit garden. Located just minutes north of La Crete.

106536 Range Road 153, La Crete



106536 Range Road 153, La Crete



Real Estate Sells at 12 PM

Moore's Agri-Trade
780-388-3759



Equipment

Tractors: (2) Massey Harris 44 • Massey Harris 44 Special 2WD • IH 434 2WD Acreage Tractor • JD 80 2WD Tractor
Harvest: McCormick 140 PT Combine **Haying:** Stooker • 4 Wheel Wagon • Bale Elevator • MF #10 & MF #9 Square Baler **Vehicles:** 1998 Dodge 2500 4X4 Ext Cab • 2006 Ford Freestar Minivan **Trailers:** Quad Trailer • Shop Built 22' Tri/A Enclosed Trailer **3 PT, Lawn & Garden:** 2 Btm Ornamental Plow • Steel Swing Set • Lawn Cart • Husqvarna Lawn Tractor • ATV Sprayer • 40" Lawn Sweep • 3 Pt 60" Disc • 3 Pt 80" Cultivator • Shop Built Wood Splitter • JD 506 3 Pt 60" Rough Cut **Recreational:** 1985 Honda 250 Big Red ATV • VERY RARE 1940's Auto Neige Bombardier Wide Gauge Passenger Snowmobile **Shop & Tools:** Lincoln Welder C75 Welder • Shop Built 46 T Shop Press • Steel Lathe • MISAL 1953 Milling Machine **Other:** 300 & 500 Gal Tanks • Hit N Miss Engine • Stationary Engines • 300+/- bu Wheat • Cut Dried Split Firewood, OSB Sheathing and Other Lumber • Household • Antiques • Older Equipment & Steel and much more!



Open House: Thur Sept 14 from 4 - 8 pm



2 Bottom Ornamental Plow



MISAL 1953 Milling Machine



Tractors



2006 Ford Freestar Minivan



Hit N Miss Engine



1940's Auto Neige Bombardier Wide Passenger Snowmobile

Internet Bidding at 12 PM

Unreserved Farm Auction for Albert and Linda Pinette

11 am - Saturday, October 7, 2017 - Wildwood, AB

Tractors & Attachments: JD 3140 2WD Loader Tractor • Massey Harris 44 Vintage Tractor • Loader Bale Forks **Construction / Industrial:** 4 ft Excavator Tooth Bucket • Used Excavator Rails & Sprockets **Harvest:** Scoop-A-Second 6" X 27 ft Grain Auger **Haying:** JD 1460 9 ft Discbine • JD 1008 Pull Type 10 ft Rough Cut Mower • IH 47 Square Baler • NH 850 Round Baler • JD 660 Side Delivery Rake • Older JD Side Delivery Rake • MF 81 9 ft Haybine • Square Bale Stooker • Older JD 7 Ft Sickle Mower **Tillage & Seeding:** JD 11 ft Field Disc • Cockshutt 246 10 ft Deep Tillage Cultivator **Trailers:** 2002 Exiss STK13B 14 ft T/A Aluminum Stock Trailer • 2004 Certified Custom 12 ft T/A Dump Trailer • Shop Built T/A Hoist Trailer • Older 7 ft X 8 ft Snowmobile Trailer **3 PT, Lawn & Garden:** Christmas Decoration Trailer **Recreational:** 2004 Bayliner 175BR Boat with Trailer • 1980 Honda 110 Trail Bike **Livestock, Feed & Equipment:** NH 516 S/A Manure Spreader • Pull Type Post Pounder • IH 1050 Mix Mill • Totara Grove Alpaca Shearing Table • Alpaca Trimming Chute • Shop Built Double Dog Run **Shop & Tools:** Canox C-BRD 35 Diesel Welder • Shop Built Log Splitter **Household & Antiques:** Maytag J2L Wringer Washer • High Steel Wheel Seed Drill **Other:** Fanning Mill • (2) 5 ft Diamond Harrows



JD 3140 2WD Loader Tractor



JD 1460 9 ft Discbine



'04 Certified 12 ft T/A Dump Trailer



'04 Bayliner Boat with Trailer



2002 14 ft T/A Alum Stock Trailer



JD 10 ft Rough Cut Mower

Internet Bidding at 12 PM

FALL 2017 Real Estate, Equipment & Consignment Auctions

Unreserved Real Estate & Equipment for The Estate of Titus Wellmer

11 am - Saturday October 14, 2017 - Dixonville AB

Dixonville, AB - The Estate of Titus Wellmer

W1: SE 25-87-24-W5 (150± acres)

Home, Shop and Barn Great cattle setup

150± pasture acres located along the Mackenzie Hwy with solid cattle handling setup with heavy corral structure, loading ramp, newer heated water/pump house with water system and livestock watering trough.

Outbuildings include two large hay sheds and livestock shelters. There is an older, 2 bedroom home and small garage. Located 30 minutes north of Grimshaw, 35 minutes to Peace River, 25 minutes south of Manning, and less than 5 minutes to Dixonville.



Equipment Listing

(3) JD 1830 2WD Tractors (1 with loader) • 3 Prong Bale Spear • 20 ft Pencil Auger • Deutz Fahr Small Round Baler • JD 1219 9 ft Haybine • 30 ft Diamond Harrows • JD C7 12 ft Spring Cultivator • 2004 Ford F150 2WD Reg Cab Pickup • (2) Farm Wagons • 3 Pt 10 ft Diamond Harrows • 3 Pt Post Hole Auger • JD JS26 26" Push Mower • JD 3 Bottom Plow • King Cutter 84" 3 Pt Blade • JD 100 3 Pt 9 ft Disc • Quantity of 2-3 ft Posts • (8) Rolls New Game Fence • (6) 24 ft Free Standing Panels • (2) Rolls New Barbed Wire • (40) 2x6 Rough Lumber • (14) 5"x 10 ft Unsharpened Posts • (145) 3-4"x 6 ft Fence Posts • (79) 6"x 8 ft Sharpened Fence Posts • (28) 6"x 8 ft Unsharpened Fence Posts • JD 34 Manure Spreader • Galvanized Water Troughs • 8 ft Stock Rack • Calf Tip Table • Auger Hopper • 6x30 Grain Auger • Various lumber and fence posts • (4) 500 Gallon Fuel Tank • Unused 15.5x38 Tractor Tire and much more!



In conjunction with the Estate of Titus Wellmer

Deadwood, AB - Reginald Edwards

E1: SE 7-88-21-W5 (159.88± acres)

All cultivated acres - Wanting to add to your farm base or considering an investment in land, then check out these 159.88± acres of productive cropland. Dugout. Located on dead end road. Quarter with former farm site across the road & north is also selling. Properties E1 & G1 are kitty corner



Deadwood, AB - Unreserved Bart & Edna Gravelle

G1: NW 8-88-21-W5 (157.02± acres)

157± acre parcel with former farm site serviced with water well, septic open discharge, power. Corrals & waterers are not included. Properties E1 & G1 are kitty corner



Unreserved Real Estate and Equipment for Henry & Abe Klassen

10 am - Thursday, April 19, 2018 - Cleardale, AB

BOOK NOW FOR 2018!

Partial Listing (see teamauctions.com for full listing)

Tractors & Attachments: 2014 Versatile 2375 4WD Tractor • 2014 Kubota M126GX MFWD Loader Tractor • Kubota M135X MFWD Loader Tractor • Versatile 876 4WD Tractor • 2012 JD 5075E 2WD Tractor • Ford 9N Vintage Tractor • Shop Built 10 ft Blade • 8 ft Smooth Bucket to fit M Series Kubota Loaders • (2) Bale Forks **Construction:** Caterpillar D6D Crawler **Harvest:** JD 9600 Combine • 2015 Rem Grain Vac • Brandt Swing Grain Auger • JD 8820 Combine • Westfield X80-36 Auger • GT 580 Batch Dryer • Sakundiak 8"x60 ft Auger • (2) JD 30 ft Straight Cut Headers • GT 370 Batch Dryer • (2) Wheatland 8" X 10 ft Transfer • Westfield W70-36 Grain Auger **Haying:** 2016 Vermeer 605N Round Baler • 2015 Vermeer MC3700 Hydro Swing 13 ft Discbine • 2015 Vermeer BPX9000 Bale Processor • JD 700 Twin Rolobar V Rake • Frontier WR1012 12 Wheel V Rake • NH 116 Hydro Swing 16 ft Haybine • NH 273 Square Baler • Valmar Hay Preservative Applicator • MF 36 Rollo Bar Rake **Tillage & Seeding:** 2015 Landoll 6230 33 ft Disc • McFarlane WDL2070-16 70 ft Harrow Draw Bar • JD 1820 35 ft Air Drill • Kello- Built 225 20 ft Heavy Disc • Willmar 5 Ton Spreader • Shop Built 20 ft Land Roller • Coop 279 40 ft Cultivator • Friggstad 322 22 ft Deep Tillage Cultivator • 45ft Diamond Harrows **Heavy Trucks:** 1980 GMC Brigadier T/A Grain Truck • 1999 Freightliner T/A Tractor • 1996 Freightliner T/A Tractor • 1988 IH S1954 S/A Grain Truck **Vehicles:** S/A Jeep **Trailers:** 2015 Lode King Super-B 28 ft Grain Trailers • 2012 Wilson 24 ft G/N T/A Aluminum Stock Trailer • 1997 Wilson 48 ft T/A High Boy Deck Trailer • 1980 Wilcox T/A Lowboy Equipment Trailer • 1990 Logan Coach G/N T/A 20 ft Stock Trailer • Shop Built 20 ft G/N T/A Deck Trailer • Shop Built S/A Tank Trailer • Shop Built S/A Deck Trailer **3 PT, Lawn & Garden:** Kubota Z1255 Zero Turn Mower • 3 Pt 6 ft Rototiller • JD 709 7 ft 3 Pt Rough Cut Mower • Westward 30 Gal Quad Sprayer • Shop Built Potato Planter • 3 Pt Bale Fork • Shop Built 3 Pt Wire Roller • Westward 7 ft 3 Pt Blade **Recreational:** 2015 Jayco Feather Ultra Light SLX 26 ft T/A Bumper Pull Travel Trailer • JD Gator RSX850i Side X Side ATV • 2006 Westwind WT 18.5 ft Bumper Pull T/A Travel Trailer • 2012 Ultralite Legend Aluminum 12 ft Fishing Boat, Grain Bins, Livestock Equipment, Feeders, Shelters Shop & Tools and much more!

UNRESERVED 7 Deeded Quarters and 1 Quarter of Long Term Grazing Lease

NW30-84-10-W6 with 6 bedroom/ 3 bath home with fully developed ICF basement - built in 2012, shop, 8 x 5000 bu granaries. Grain & pasture/hay
 SW19-84-10-W6 - Spacious 4 bedroom / 2 bath home built in 2015, hay & pasture land
 NW19-84-10-W6 - Hay & Pasture Land
 NW35-83-11-W6 - Approx half in grain production with balance hay & pasture
 NE35-83-11-W6 - Primarily grain & hay production with balance in pasture with dugout
 SW32-84-10-W6 - Primarily grain production
 SE32-84-10-W6 - Grain land and fenced pasture
 SE1-85-11-W6 - Long term grazing lease



FALL 2017 Real Estate, Equipment & Consignment Auctions



Get it Sold!

TEAM AUCTIONS
Sekura Auctions Since 1966

internet
BIDDING

Consignment Auctions

10 AM - Saturday, Sept 16, 2017
Grimshaw, AB
Isaac Peters 780-834-7072

10 AM - Saturday, Sept 16, 2017
McBride, BC
Corey Sekura 780-898-5600

10 AM - Saturday Oct 21, 2017
Drayton Valley, AB
Corey Sekura 780-898-5600
Justin Mayer 780-898-5603

10 AM - Saturday Oct 28, 2017
La Crete, AB
David Froese 780-841-7737

10 AM - Saturday Dec 16, 2017
Drayton Valley, AB
Corey Sekura 780-898-5600
Justin Mayer 780-898-5603



Sept 16 Grimshaw



Sept 16 Grimshaw



Oct 28 La Crete



Sept 16 Grimshaw

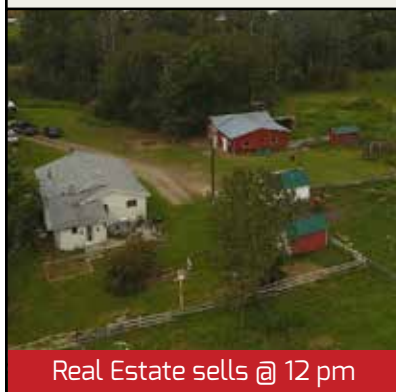


Oct 21 Drayton Valley



Oct 28 La Crete

Unreserved Real Estate for Lloyd Peckham In conjunction with Drayton Valley Oct 21 Consignment Auction



Real Estate sells @ 12 pm

P1: SW36-53-9-W5- 149 53501 Rge Rd 91, Wildwood, Yellowhead County
149± acre farm located just east of Wildwood less than 1 km off the Yellowhead Highway (Hwy 16). Complete with 3 bedroom 2 bath home and shop/garage.

Moore's Agri-Trade Ltd
780-388-3759



Feature Property

Consigning early gets you the best Advertising & Internet Exposure!

For complete Consignment and other Auction listings go to www.teamauctions.com

TEAM AUCTIONS
Sekura Auctions Since 1966

www.teamauctions.com
Drayton Valley AB 780-542-4337
La Crete AB 780-927-4060

TEAM AUCTIONS
Sekura Auctions Since 1966